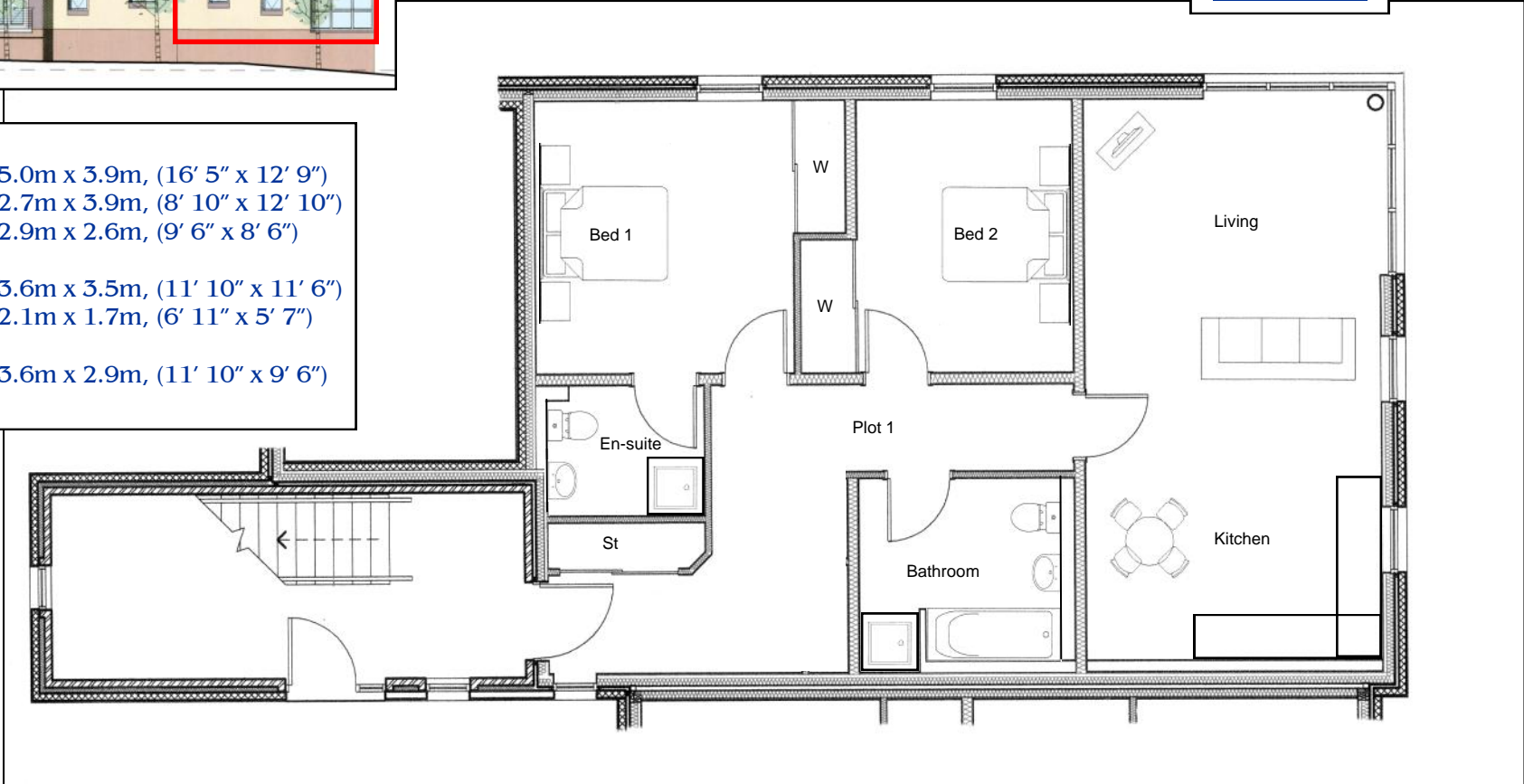


# Park Terrace, Brighton's



Plot 1

Living Room	5.0m x 3.9m, (16' 5" x 12' 9")
Kitchen	2.7m x 3.9m, (8' 10" x 12' 10")
Bathroom	2.9m x 2.6m, (9' 6" x 8' 6")
Bedroom 1	3.6m x 3.5m, (11' 10" x 11' 6")
En-suite	2.1m x 1.7m, (6' 11" x 5' 7")
Bedroom 2	3.6m x 2.9m, (11' 10" x 9' 6")



The information in this document is intended to provide an accurate indication about the property and does not form part of any contract. Whilst every effort has been made to ensure their accuracy, this cannot be guaranteed. The vendor reserves the right to alter or amend the layouts and specification as necessary, without prior notice being given. Any literature provided does not form part of any contract.