

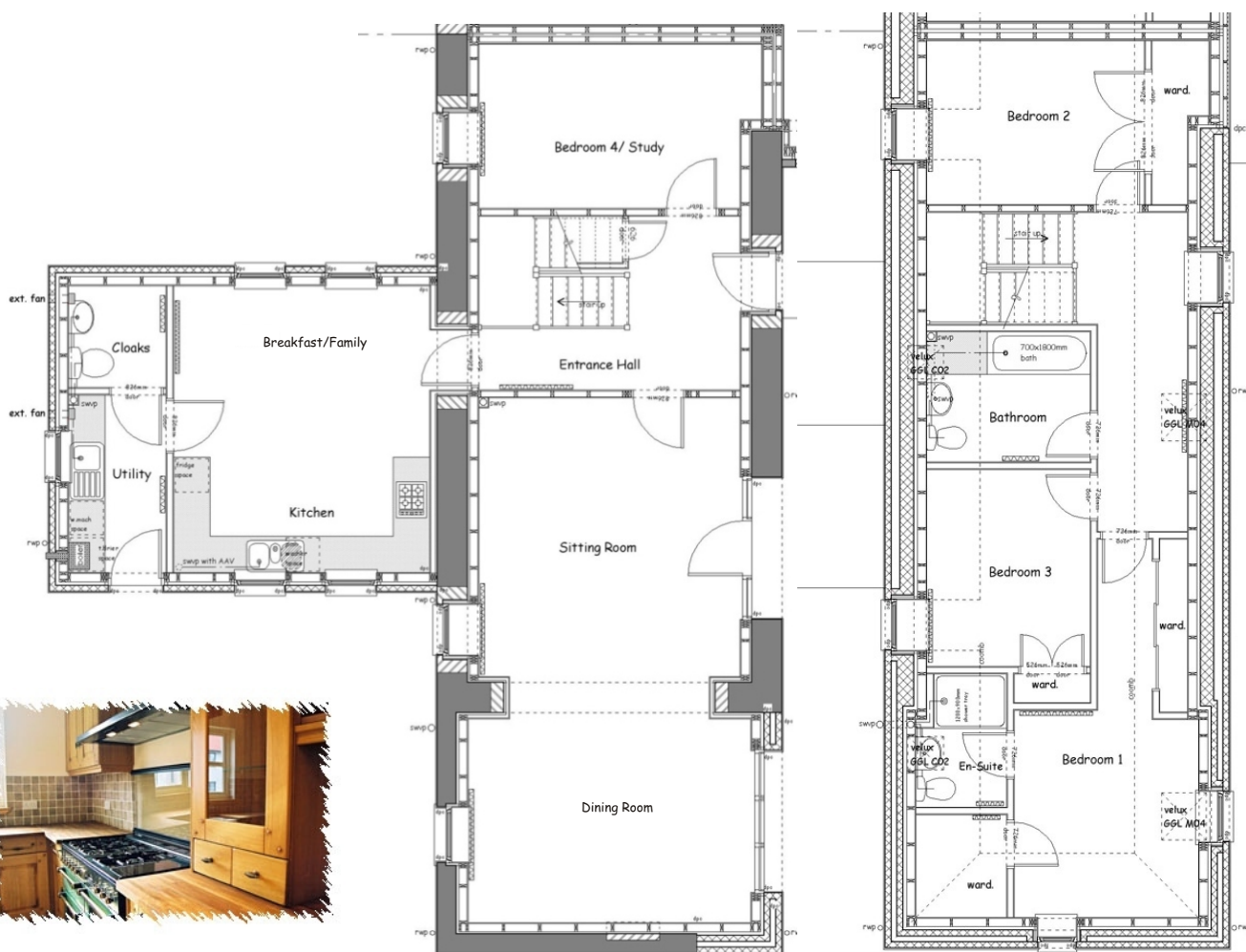
Avon Brook Steading

Falkirk



Sitting Room	5.0m x 4.3m	(16'5" x 14'1")	Bedroom 1	3.5m x 3.1m	(11'6" x 10'2")
Dining Room	3.7m x 4.7m	(12'2" x 15'5")	En-suite	2.2m x 1.5m	(7'3" x 4'11")
Breakfast/Kitchen	4.8m x 4.2m	(15'9" x 13'9")	Bedroom 2	3.6m x 2.8m	(11'10" x 9'2")
Utility Room	1.6m x 2.9m	(5'5" x 9'6")	Bedroom 3	3.3m x 2.7m	(5'8" x 8'10")
Cloakroom	1.6m x 1.7m	(5'5" x 5'6")	Bedroom 4	4.7m x 2.8m	(15'5" x 9'2")
			Bathroom	2.7m x 2.2m	(8'10" x 7'3")

Baird Allan
Homes
House One



The information in this document is intended to provide an accurate indication about the property and does not form part of any contract and whilst every effort has been made to ensure their accuracy this cannot be guaranteed. The vendor reserves the right to alter or amend the specifications as necessary without prior notice. Any literature provided does not form any part of a sales contract.